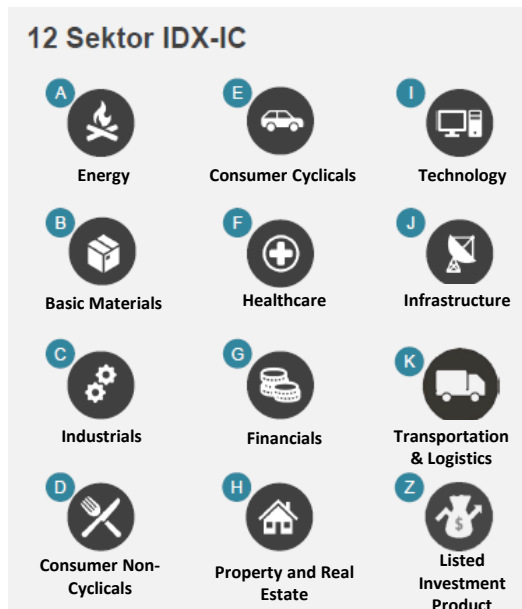
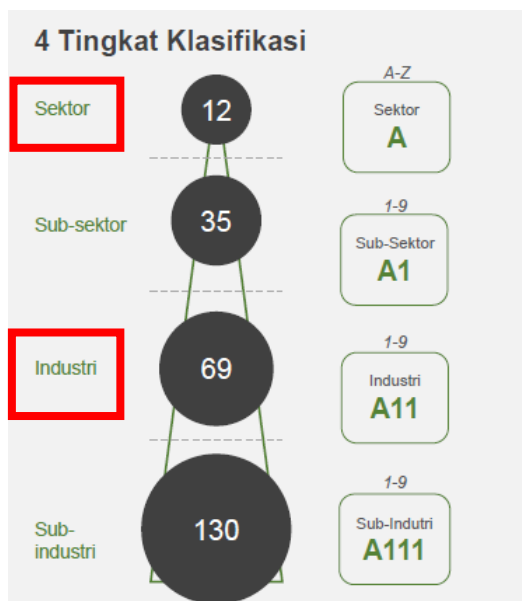


IDX INDUSTRIAL CLASSIFICATION PERUSAHAAN TERCATAT DI BURSA EFEK INDONESIA

Bursa Efek Indonesia (BEI) menerapkan IDX Industrial Classification atau IDX-IC untuk mengklasifikasikan Perusahaan Tercatat. Penentuan sektor, sub-sektor, industri atau sub-industri didasarkan pada eksposur pasar. BEI berhak menentukan klasifikasi Perusahaan Tercatat berdasarkan evaluasi dan justifikasi BEI.



Halaman ini akan membantu Anda untuk mengidentifikasi sektor dan / atau industri dari perusahaan yang saat ini terdaftar di Bursa Efek Indonesia dan bagaimana posisi keuangan perusahaan tersebut jika dibandingkan dengan perusahaan Anda.

Untuk informasi lebih lanjut mengenai IDX –IC anda dapat mengakses <http://www.idx.co.id>

IDX INDUSTRIAL CLASSIFICATION

-SEKTOR DAN INDUSTRI-

PERUSAHAAN TERCATAT DI BURSA EFEK INDONESIA

A



ENERGY
(IDXENERGY)

- A11 Oil & Gas
- A12 Coal
- A13 Oil, Gas & Coal Supports
- A21 Alternative Energy Equipment
- A22 Alternative Fuels

B



Basic Materials
(IDXBASIC)

- B11 Chemicals
- B12 Construction Materials
- B13 Containers & Packaging
- B14 Metals & Minerals
- B15 Forestry & Paper

C



Industrials
(IDXINDUST)

- C11 Aerospace & Defense
- C12 Building Products & Fixtures
- C13 Electrical
- C14 Machinery
- C21 Diversified Industrial Trading
- C22 Commercial Services
- C23 Professional Services
- C31 Multi-sector Holdings

D



Consumer Non-Cyclicals
(DXNONCYC)

- D11 Food & Staples Retailing
- D21 Beverages
- D22 Processed Foods
- D23 Agricultural Products
- D31 Tobacco
- D41 Household Products
- D42 Personal Care Products

E



Consumer Cyclical
(IDXCYCLIC)

- E11 Auto Components
- E12 Automobiles
- E21 Household Goods
- E31 Consumer Electronics
- E32 Sport Equipment & Hobbies Goods
- E41 Apparel & Luxury Goods

- E51 Tourism & Recreation
- E52 Education & Support Services
- E61 Media
- E62 Entertainment & Movie Production
- E71 Consumer Distributors

- E72 Internet & Homeshop Retail
- E73 Department Stores
- E74 Specialty Retail

F



Healthcare
(IDXHEALTH)

- F11 Healthcare Equipment & Supplies
- F12 Healthcare Providers
- F21 Pharmaceuticals
- F22 Healthcare Research

I



Technology
(IDXTECHNO)

- I11 Online Applications & Services
- I12 IT Services & Consulting
- I13 Software
- I21 Networking Equipment
- I22 Computer Hardware
- I23 Electronic Equipment, Instruments & Components

J



Infrastructures
(IDXINFRA)

- J11 Transport Infrastructure Operator
- J21 Heavy Constructions & Civil Engineering
- J31 Telecommunication Service
- J32 Wireless Telecommunication Services
- J41 Electric Utilities
- J42 Gas Utilities
- J43 Water Utilities

G



Financials
(IDXFINANCE)

- G11 Banks
- G21 Consumer Financing
- G22 Business Financing
- G31 Investment Services
- G41 Insurance
- G51 Holding & Investment Companies

K



Transportation & Logistic
(IDXTRANS)

- K11 Airlines
- K12 Passenger Marine Transportation
- K13 Passenger Land Transportation
- K21 Logistics & Deliveries

H



Properties & Real Estate
(IDXPROPERT)

- H11 Real Estate Management & Development

Z



Listed Investment Product

- Z11 Investment Trusts
- Z21 Bonds